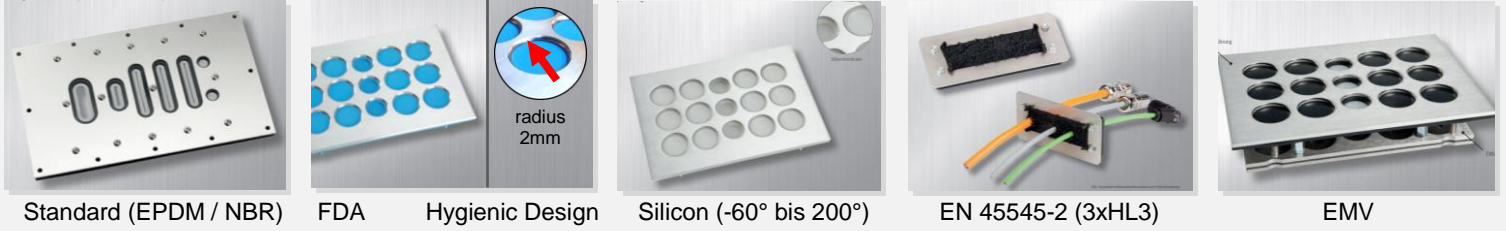


# Checklist KDP ON DEMAND



## Variants



## Material



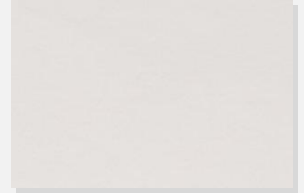
V2A



V4A



Aluminum anodized  
(cost-efficient)



PVC



UP GM 203  
(good electrical insulation values)

## Fixing



standard Ø4.5mm  
Ø by choice through holes

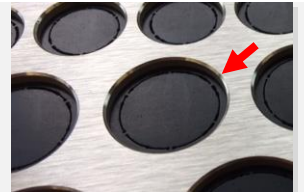


M4 Weld studs M5

## Edge



Deburring  
(cost-efficient)



chamfering  
(0.5x45° chamfer milling)

## Installation Situation



outside on the enclosure  
(standard)

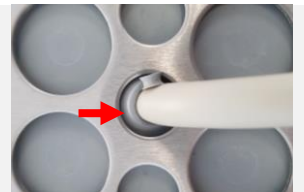


inside on the enclosure  
(ground plate)

## Strain-relief



with strain-relief

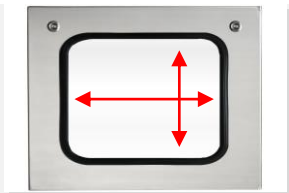


without strain-relief  
(introduce both sides / cost-efficient)

## Dimension



plate size / useful area  
exact variable up to



Cut-out  
exact variable up to

L x B =

L x B =

## Cable Diameters

	amount		amount		amount
1.0 – 3.5mm	<input type="text"/>	8.0 – 12.0mm	<input type="text"/>	18.0 – 25.0mm	<input type="text"/>
3.0 – 5.0mm	<input type="text"/>	9.0 – 14.0mm	<input type="text"/>	16.0 – 28.0mm	<input type="text"/>
3.5 – 6.5mm	<input type="text"/>	11.0 – 16.0mm	<input type="text"/>	18.0 – 32.0mm	<input type="text"/>
4.5 – 8.5mm	<input type="text"/>	12.0 – 18.0mm	<input type="text"/>	18.0 – 36.0mm	<input type="text"/>
6.0 – 10.0mm	<input type="text"/>	14.0 – 20.0mm	<input type="text"/>	36.0 – 49.0mm	<input type="text"/>
7.0 – 11.0mm	<input type="text"/>	16.0 – 24.0mm	<input type="text"/>		<input type="text"/>

## General Information

Company:

Surname, Name:

Phone:

Notes:

Country:

Email:

Comp.-Nr.

Project/Reference:

QTY:  Date Requested:

Requested by:

Date: